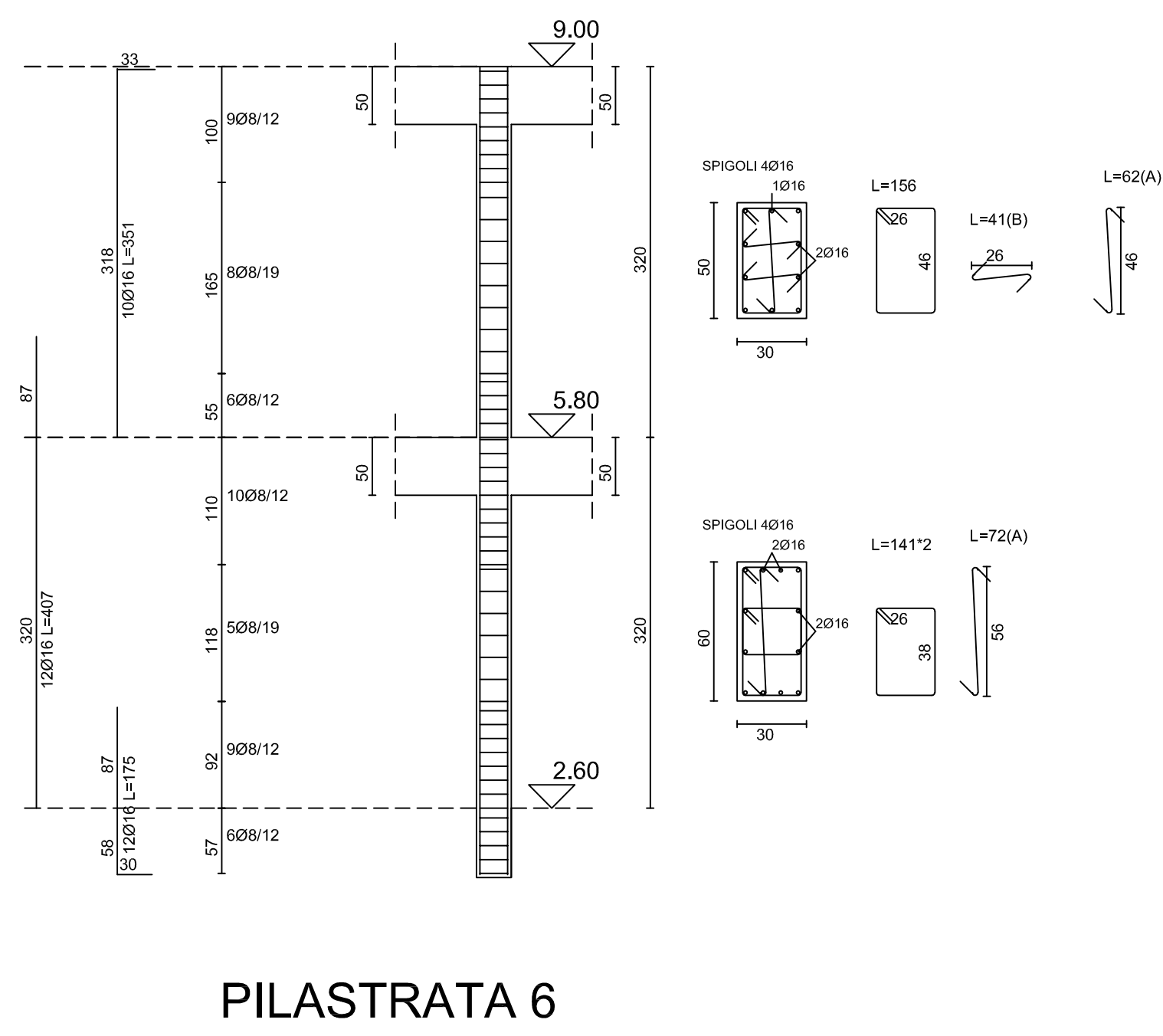
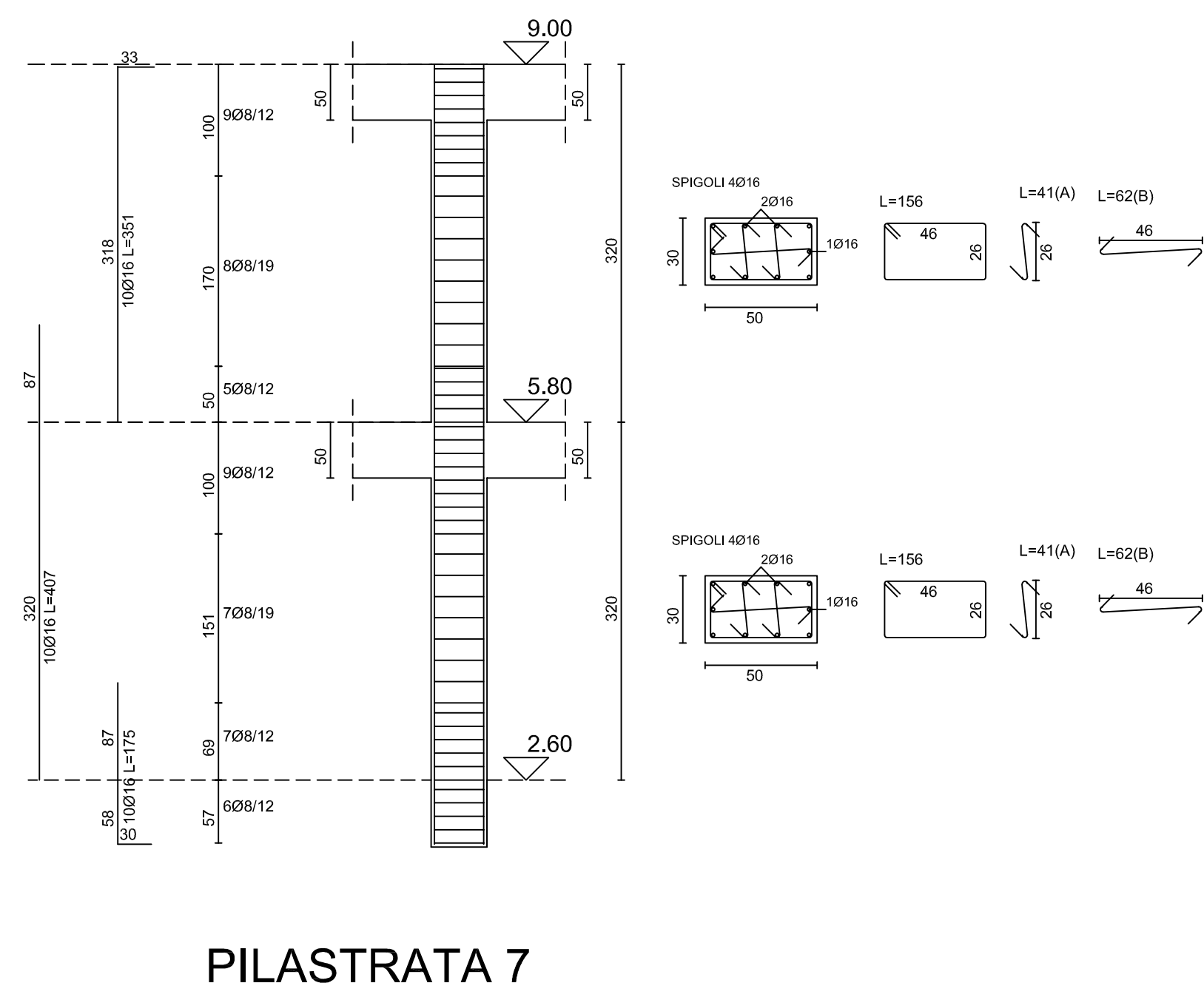


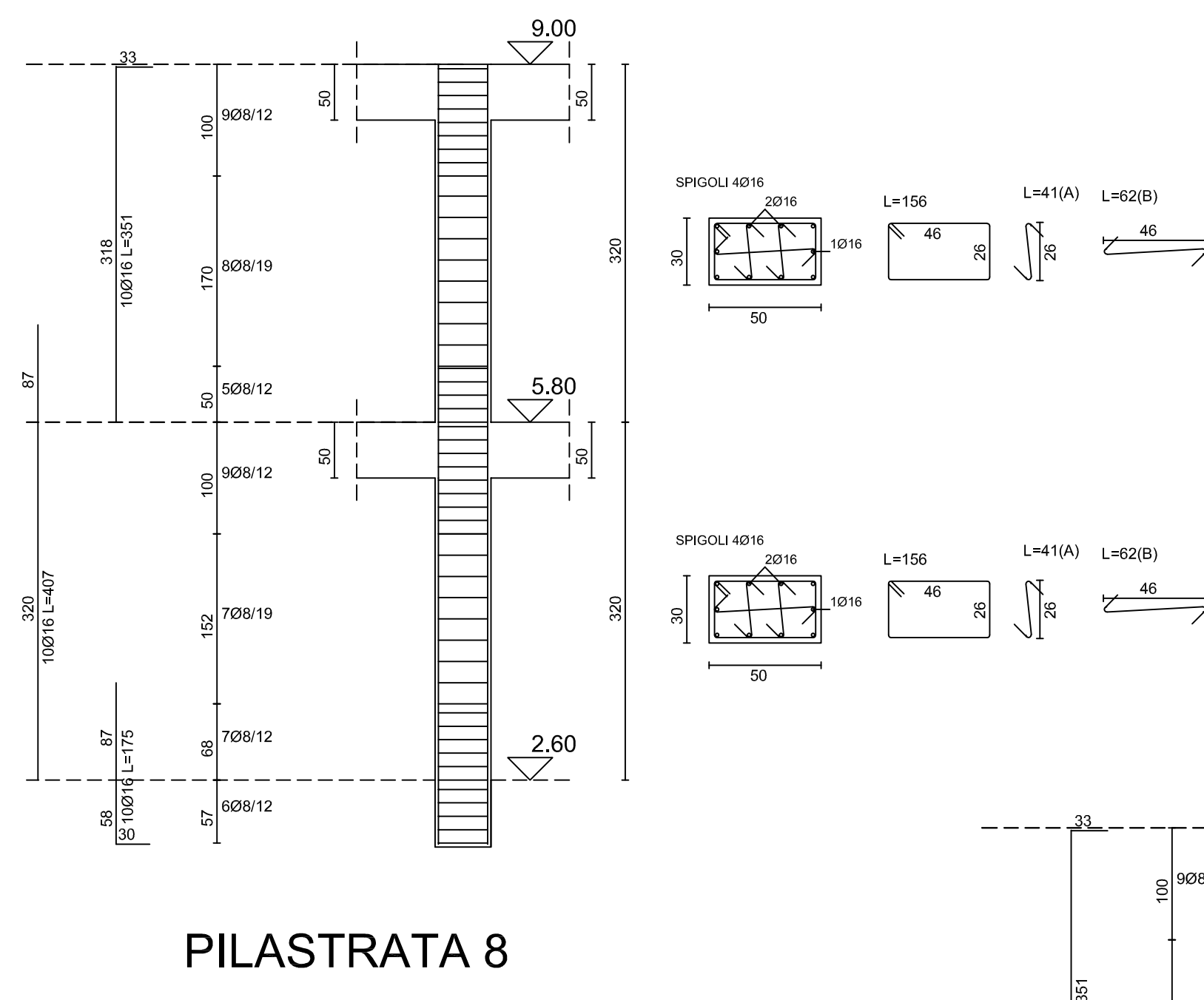
PILASTRATA 52



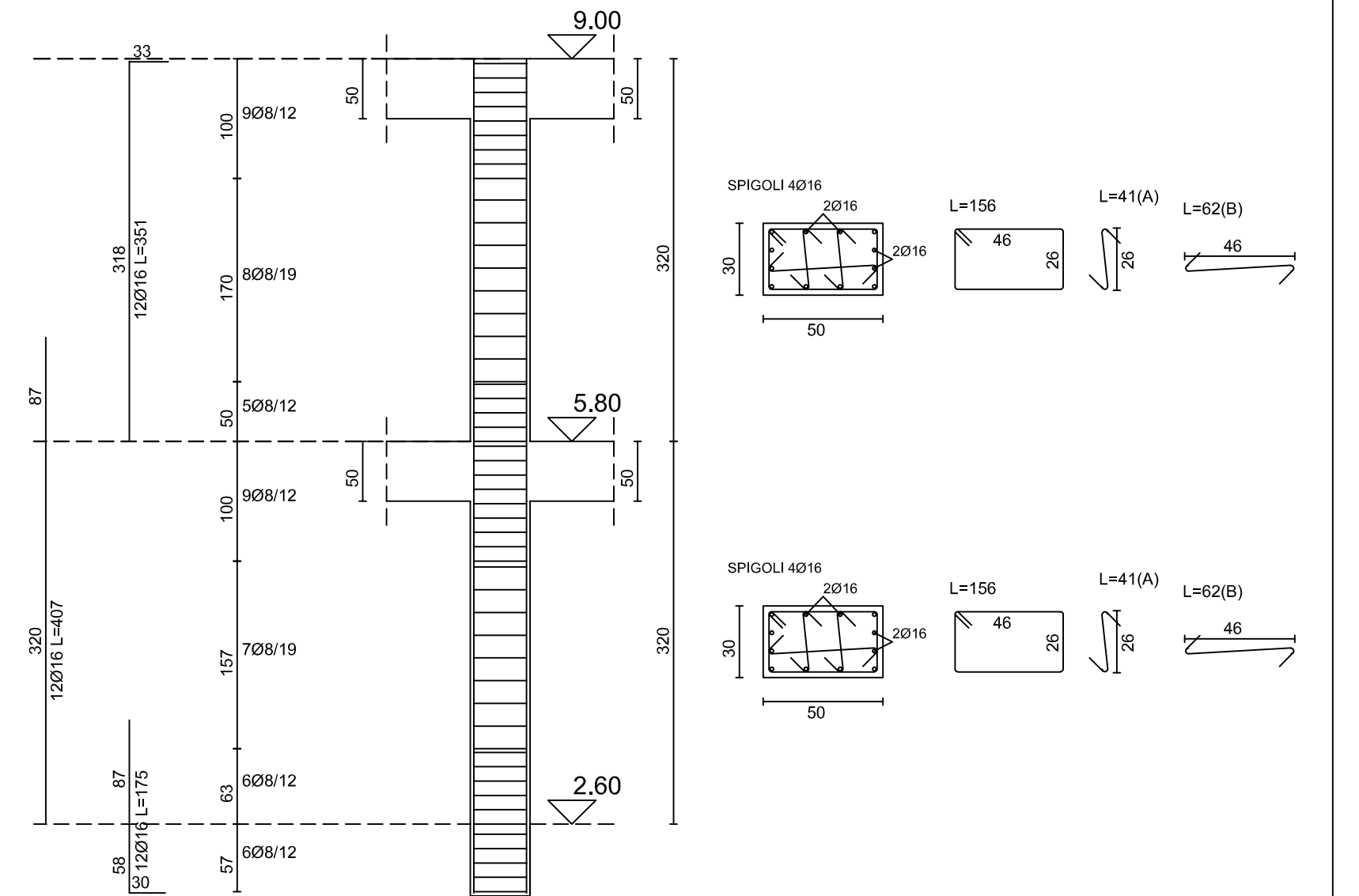
PILASTRATA 6



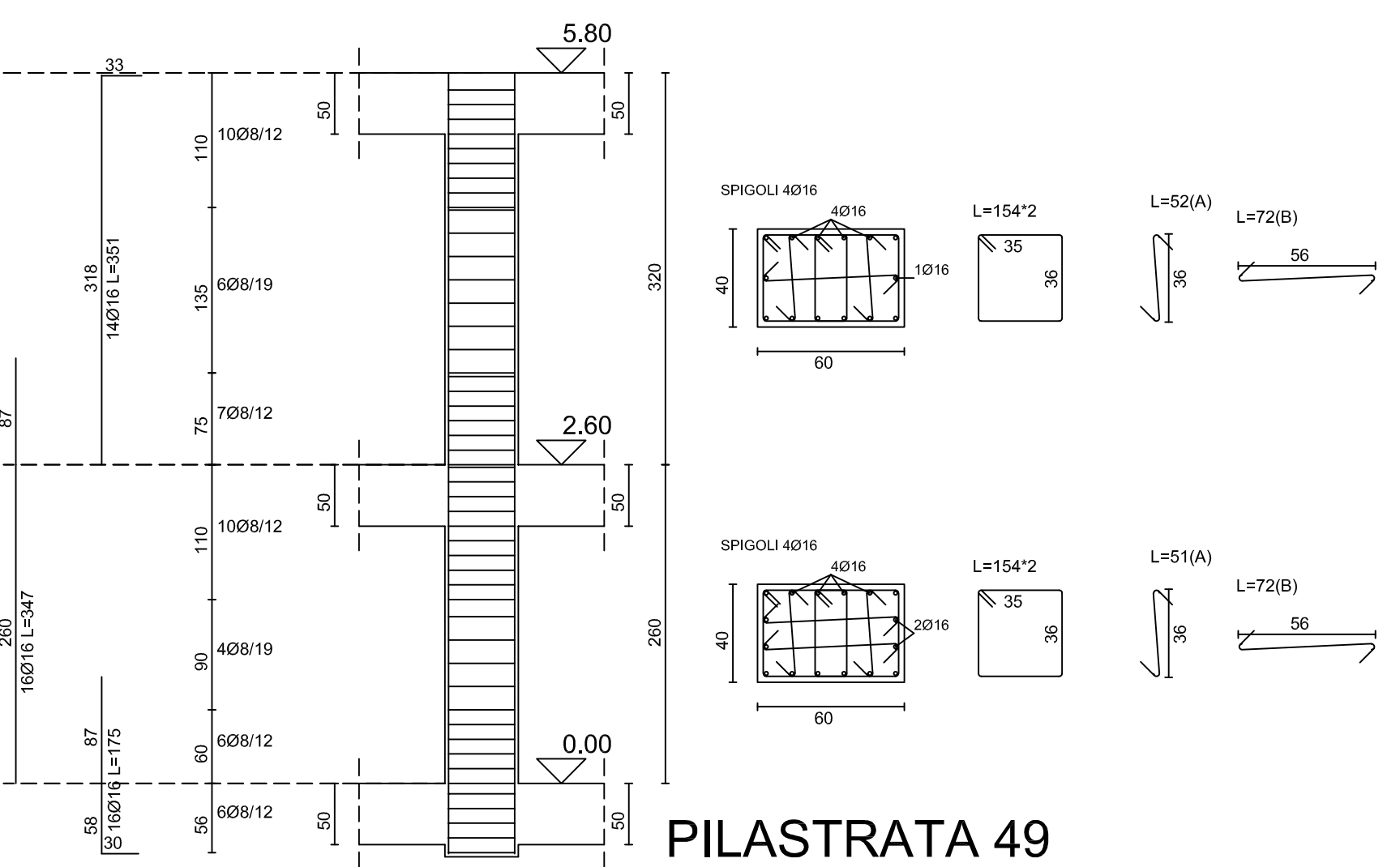
PILASTRATA 7



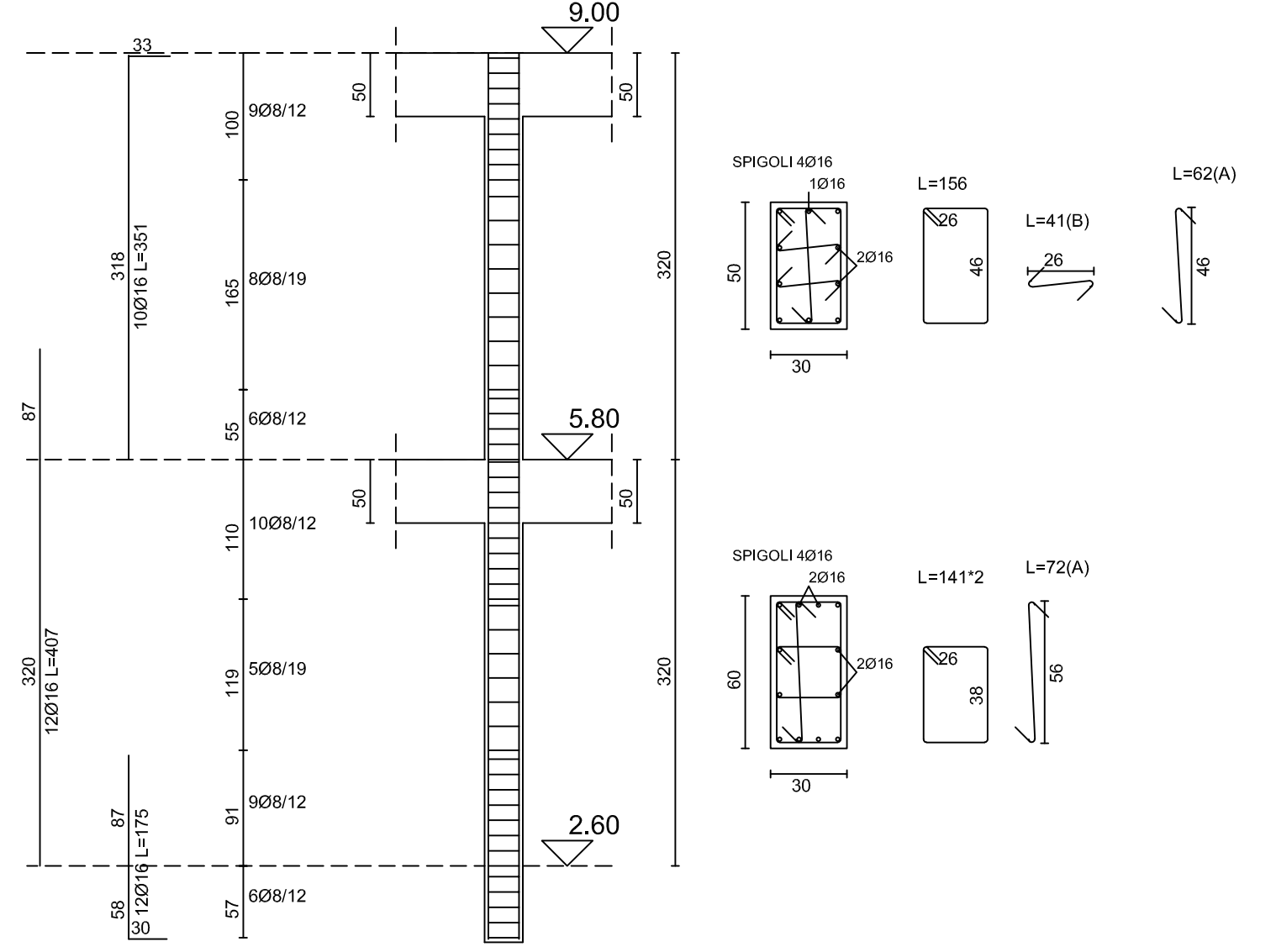
PILASTRATA 8



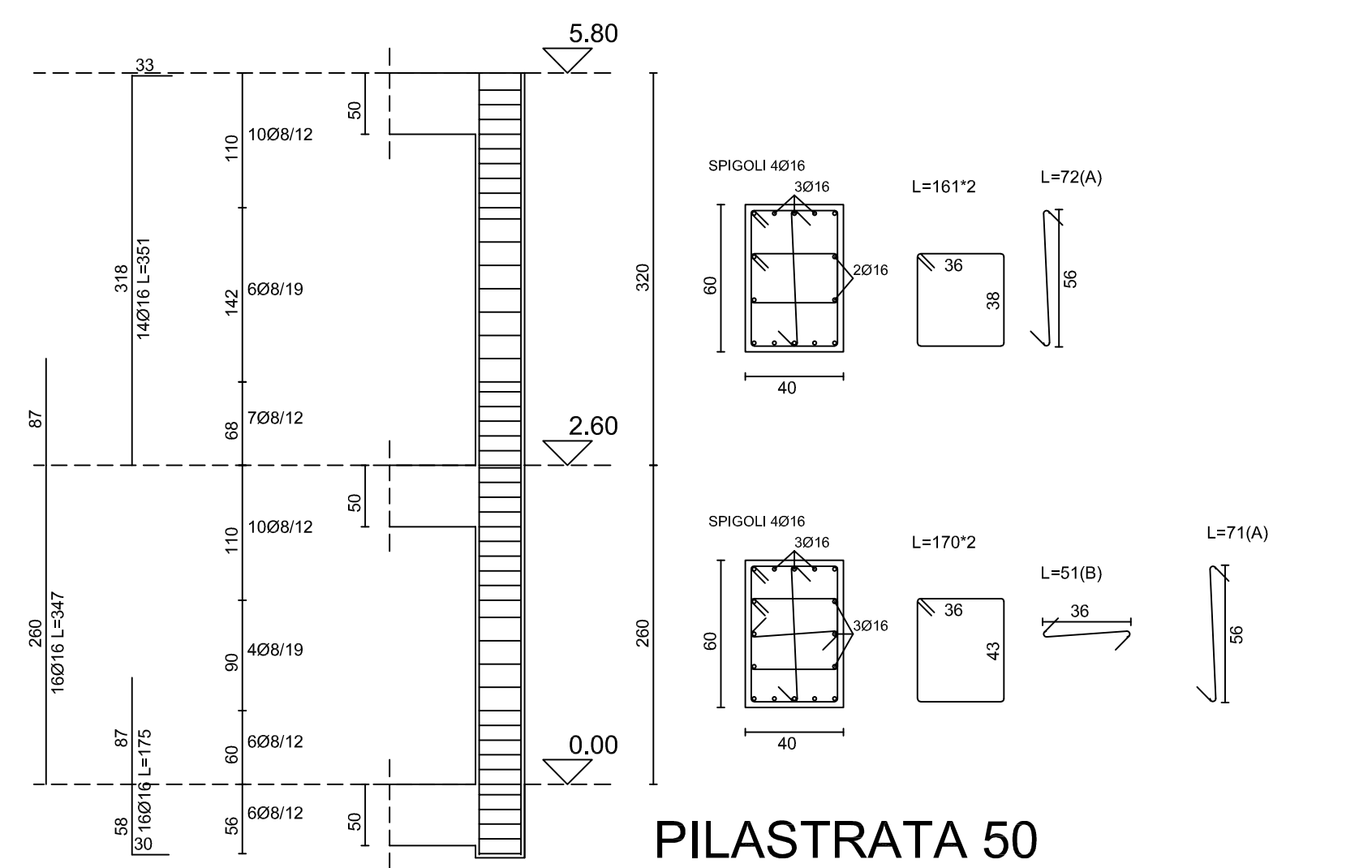
PILASTRATA 9



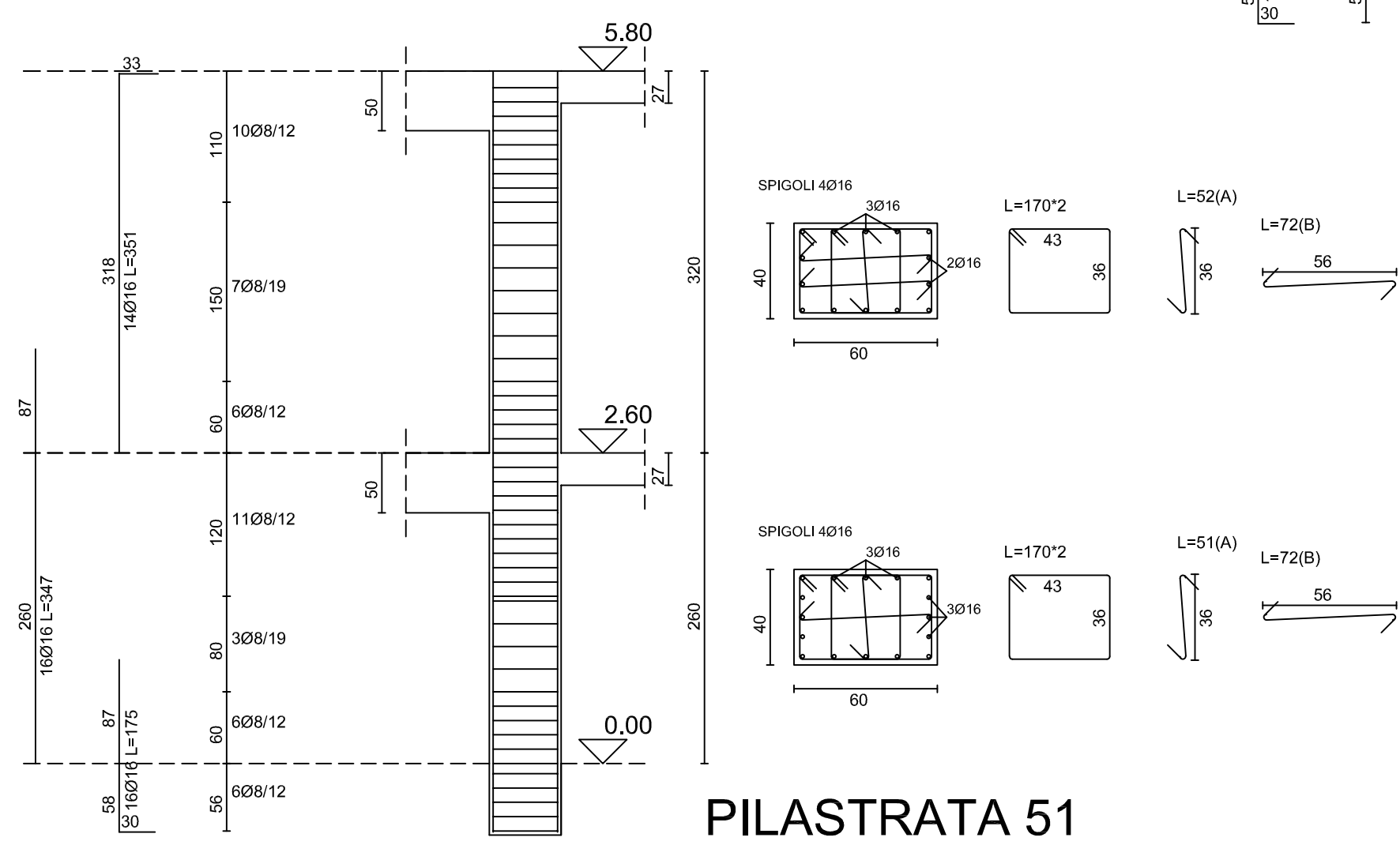
PILASTRATA 49



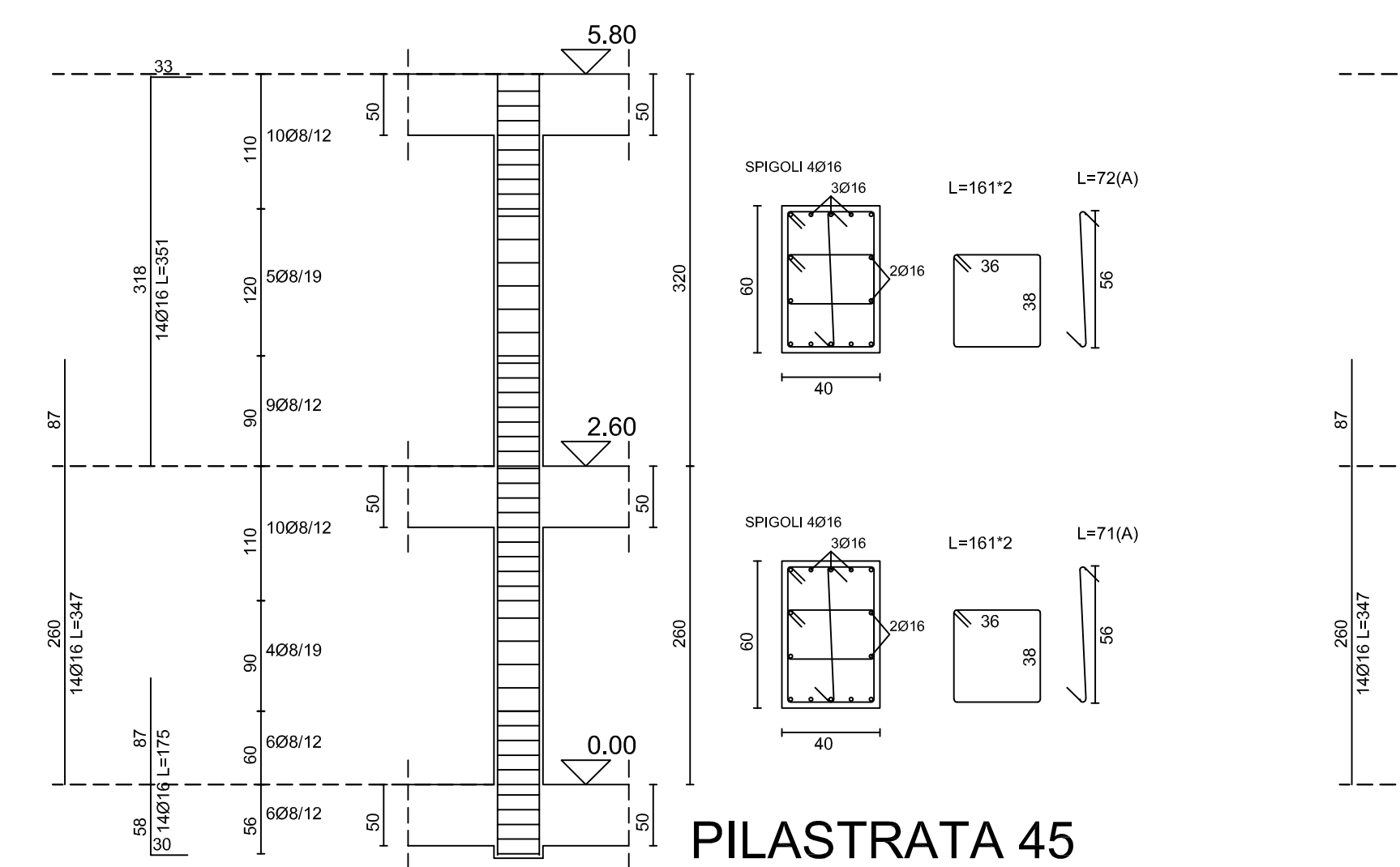
PILASTRATA 5



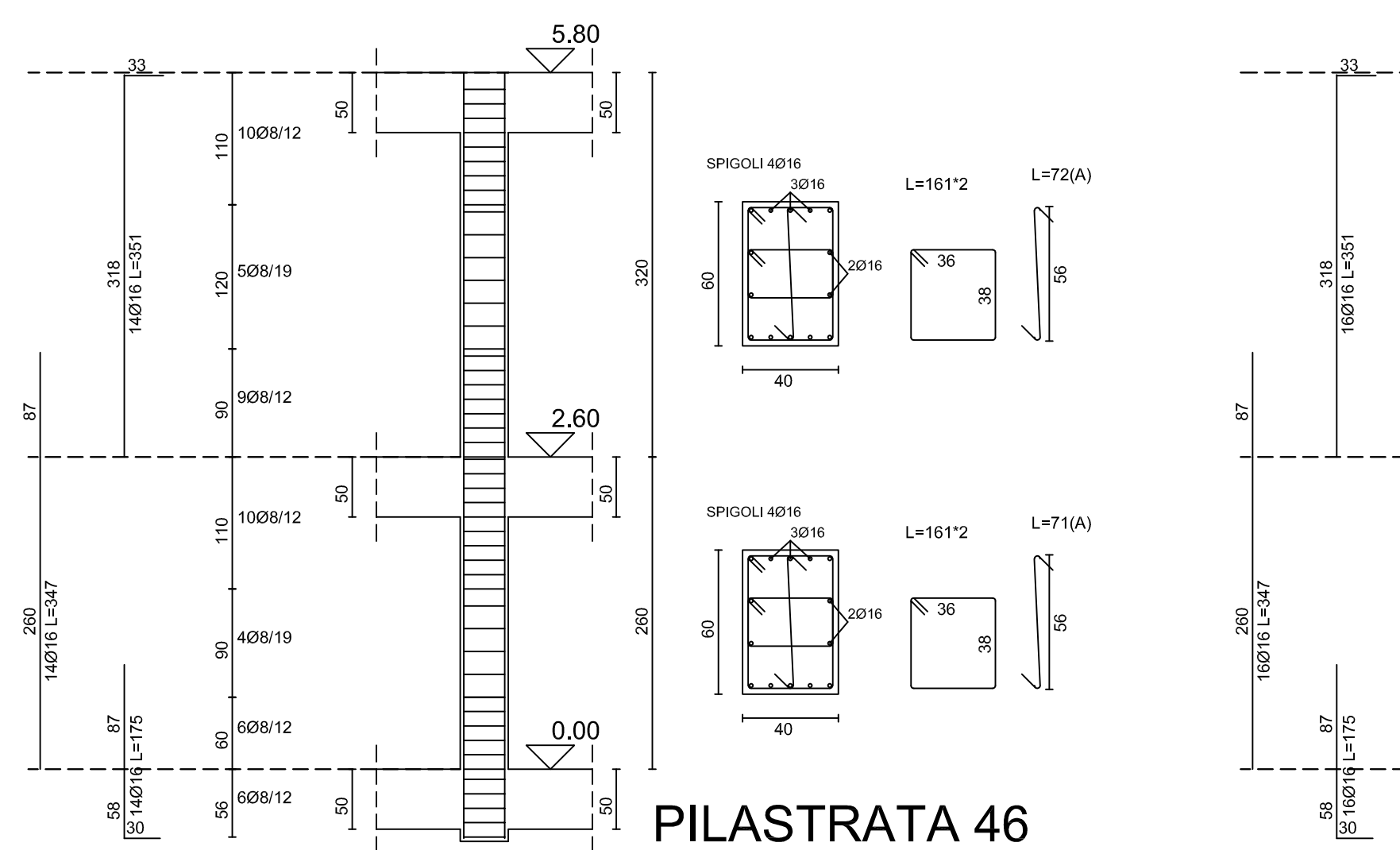
PILASTRATA 50



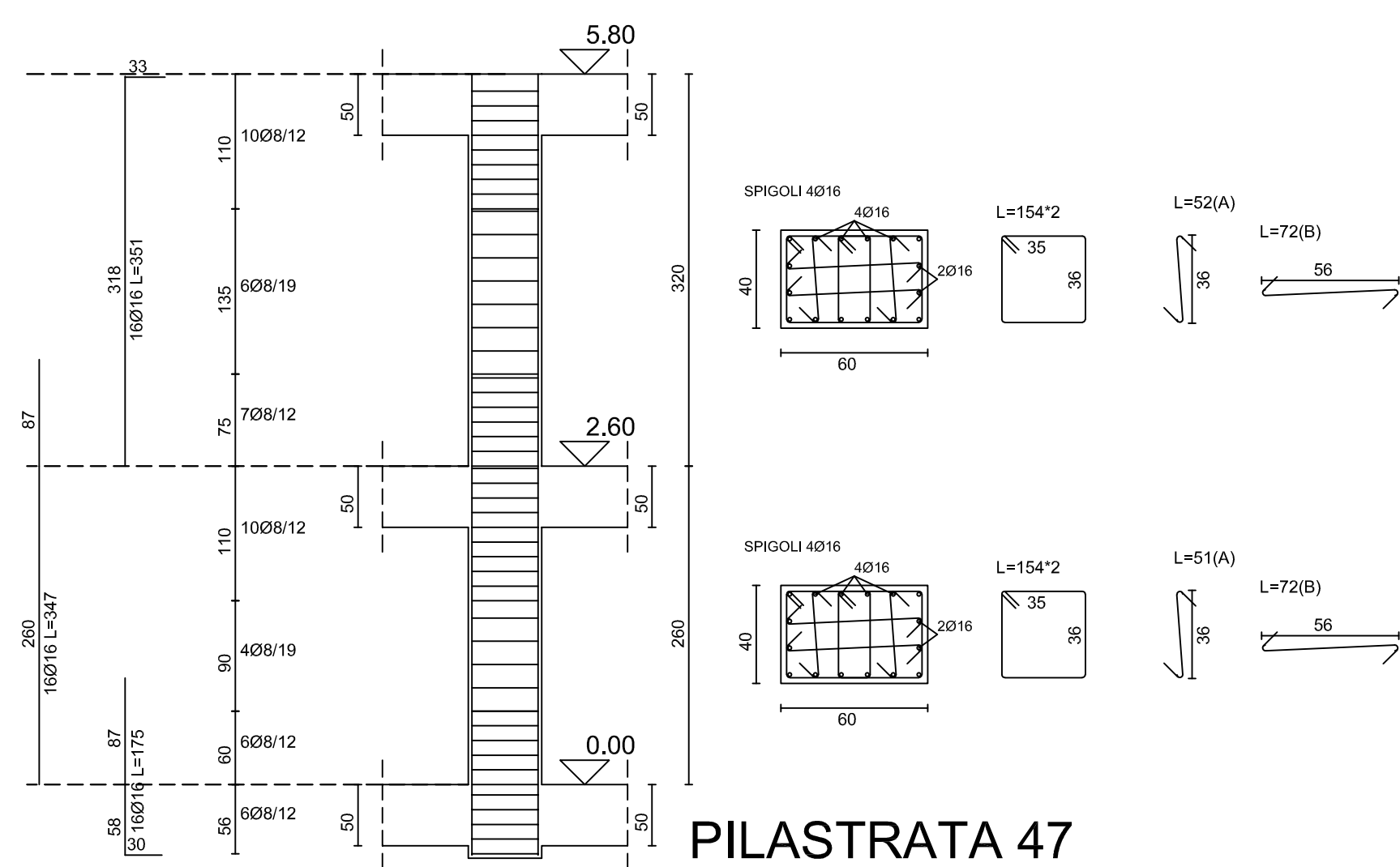
PILASTRATA 51



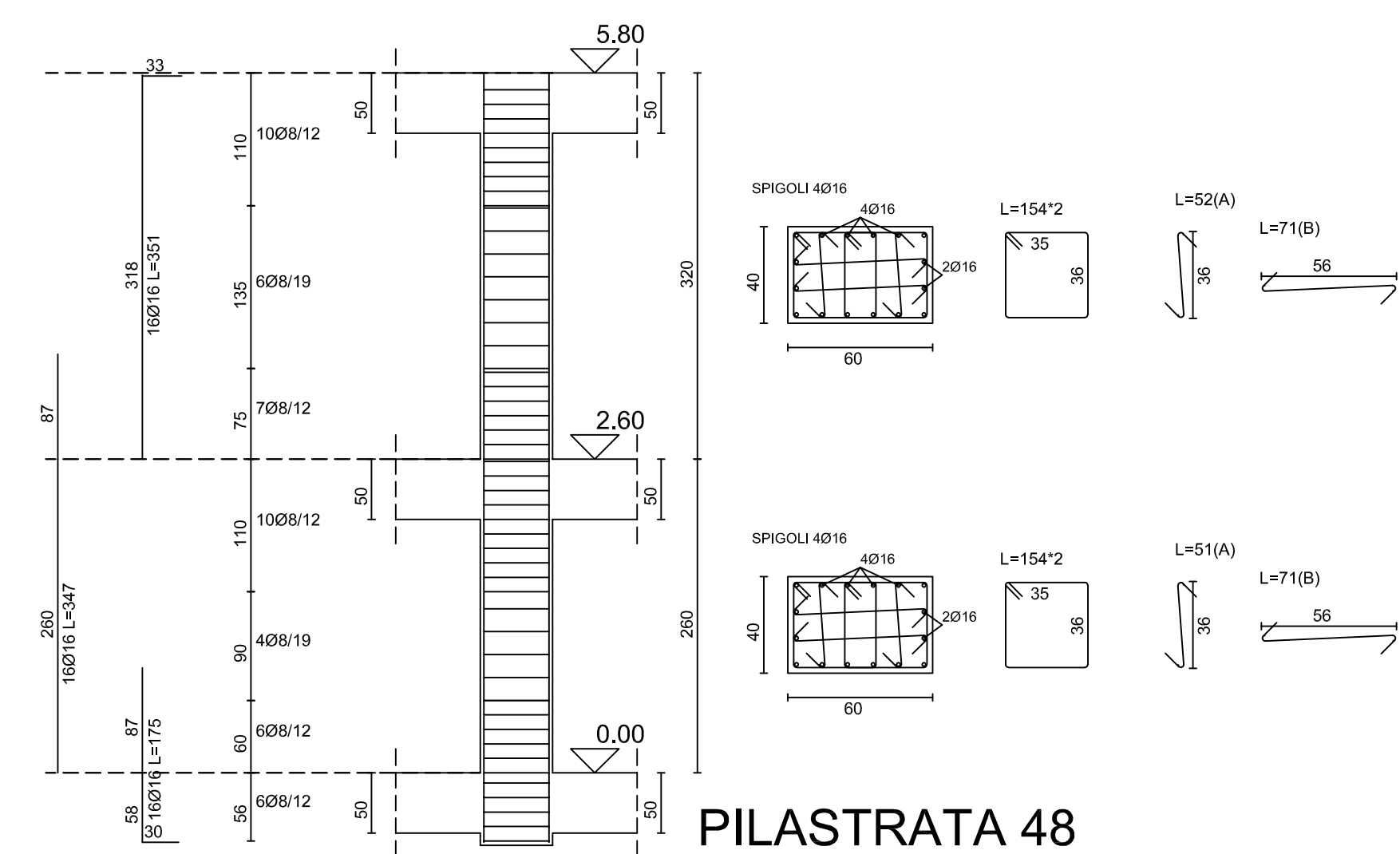
PILASTRATA 45



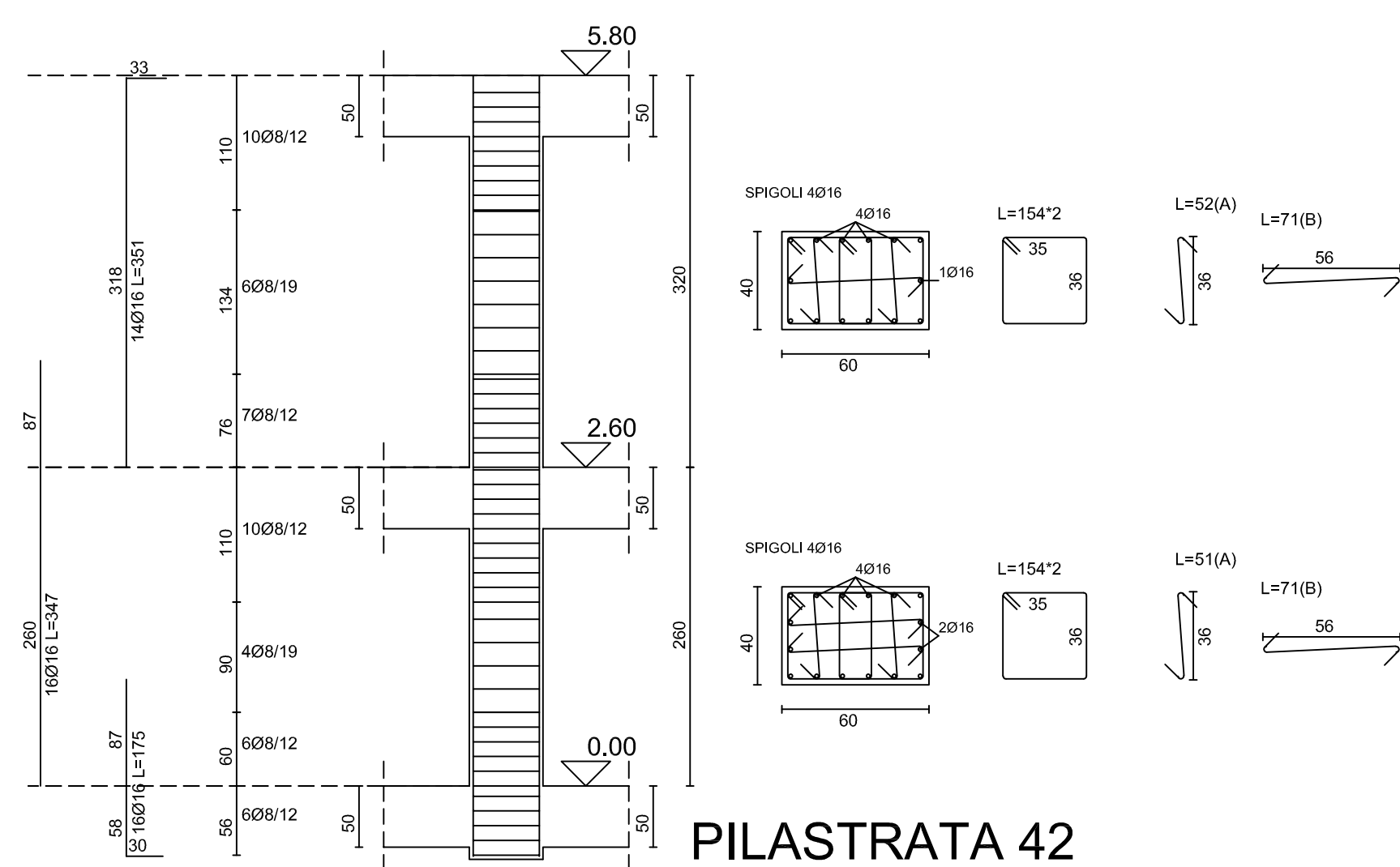
PILASTRATA 46



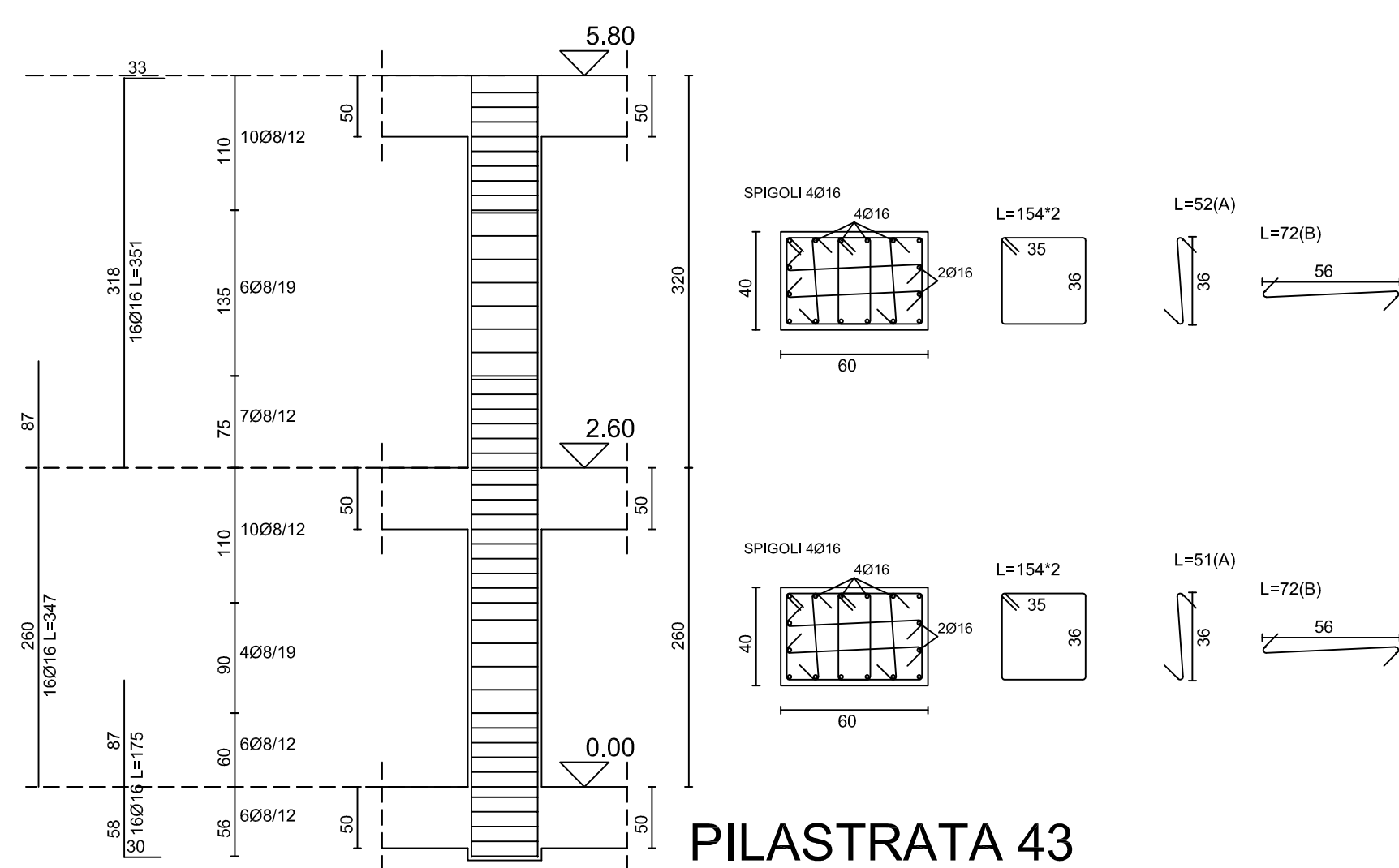
PILASTRATA 47



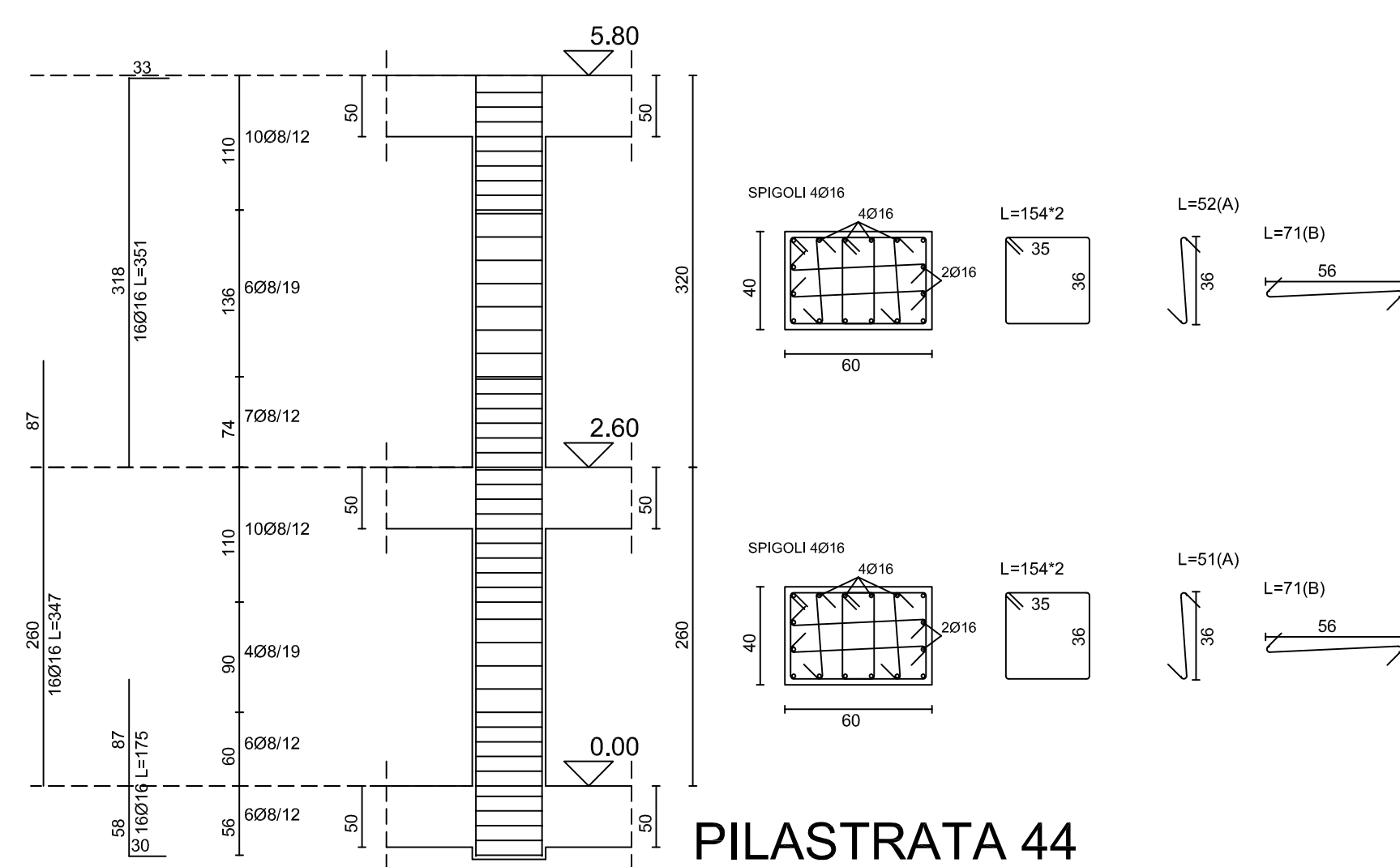
PILASTRATA 48



PILASTRATA 42



PILASTRATA 43



PILASTRATA 44



CITTA' DI  
**CAPACCIO PAESTUM**

**PROGRAMMA INTEGRATO DI EDILIZIA RESIDENZIALE SOCIALE  
RECUPERO E RIFUNZIONALIZZAZIONE  
EX COMPARTO RURALE DA DESTINARE A  
EDILIZIA RESIDENZIALE SOCIALE E SERVIZI  
IN LOCALITA' GROMOLA DI CAPACCIO PAESTUM (SA)**

**PROGETTO ESECUTIVO**

Committente  
Città di Capaccio Paestum  
(Provincia di Salerno)

Sindaco  
Avv. Francesco ALFIERI



Elaborato:

**TAV. N. 69.4**

STATO DI PROGETTO  
FABBRICATO "A"  
PILAstrate

Scala: 1:100

2021

Data: AGOSTO

I Progettisti

Ing. Giovanni Vito BELLO  
Arch. Gerolamo DI FILIPPO

Il R.U.P.  
Ing. Federica Turi